

# Tech & IT Order Form.

Event Name: London Book Fair 2025

Event Dates: 11-13 March 2025

Book online at [www.dbpixelhouse.com/book](http://www.dbpixelhouse.com/book)


Early bird order by date: 14/02/2025

Last online orders by date: 28/02/2025

Password: LBF2025

THE LONDON  
BOOK FAIR

 11–13 March 2025

 Olympia London



# LED VIDEOWALLS.

LED is the greatest way of expressing your brand and presenting top-tier content at an event for all to see. DBpixelhouse stock one of Europe's largest inventories of LED videowalls for hire.

## We can offer:

1.5mm Ultra-HD LED

1.9mm Curvable LED

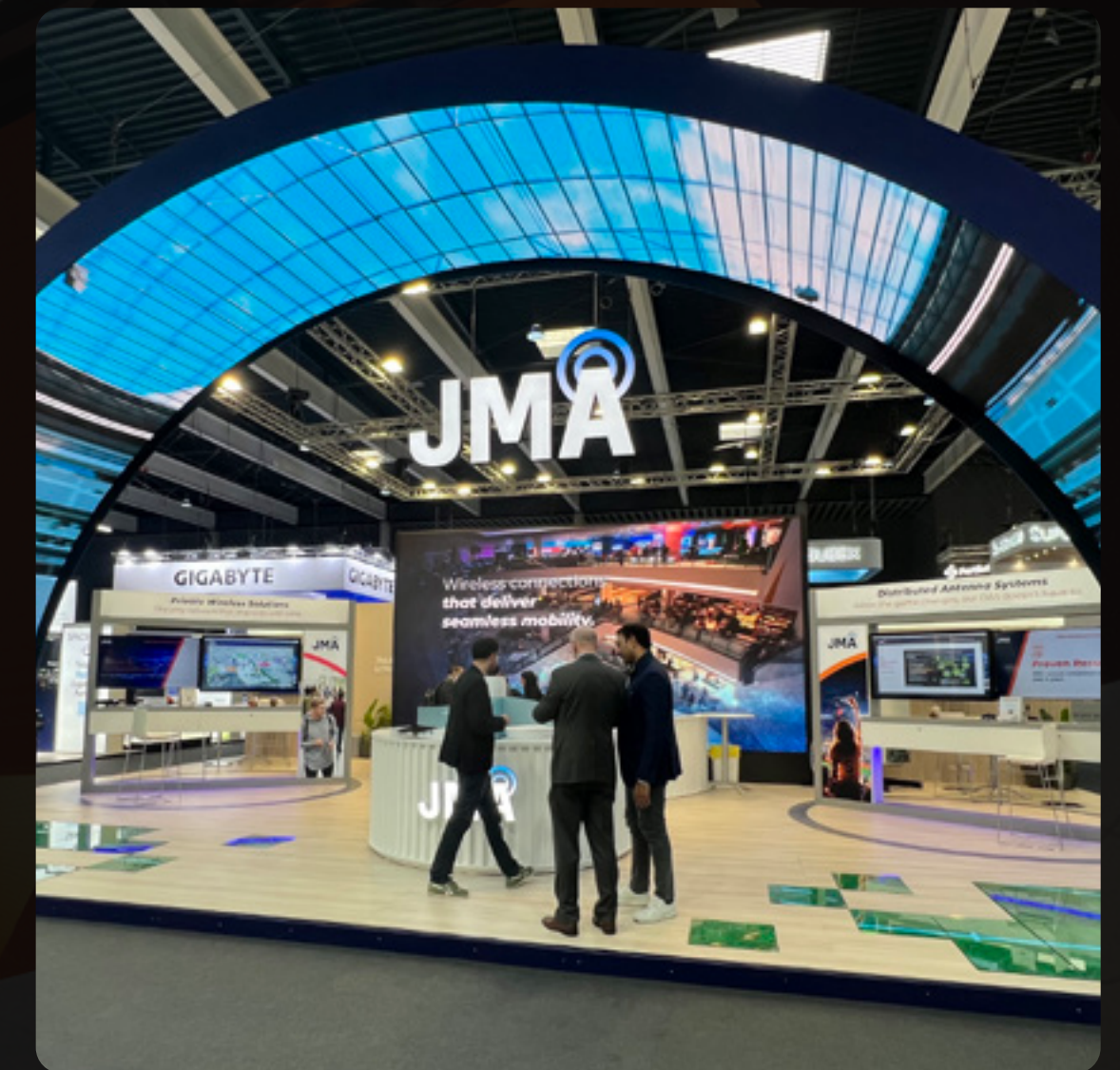
2.5mm Modular LED

2.6mm Curvable LED

3.9mm LED

Indoor / Outdoor LED Trailers

LED Posters





# SCREENS.

Screens are the unsung hero of many events, and can be a great cost-effective way to improve your exhibit space.

Item	Early Bird Rate	Standard Rate
98" 4K	Contact Us	Contact Us
90"	£1,140	£1,368
85" 4K	£775	£925
80"	£690	£828
70"	£570	£684
65" 4K	£450	£540
60"	£390	£486
55" 4K	£285	£432
49" 4K	£255	£306
46"	£210	£252
43"	£200	£240
40"	£180	£216
32"	£120	£144
27"	£85	£102
22"	£40	£48





# TOUCHSCREENS.

Touchscreens are essential for creating an interactive experience on your stand whilst utilising large-format display solutions.

Item	Early Bird Rate	Standard Rate
86"	£2,250	£2,700
70"	£1,200	£1,740
65"	£1,050	£1,260
55"	£780	£936
46"	£540	£648
42"	£450	£540
32"	£354	£425
23"	£255	£306
22"	£150	£180





# TABLETS.

Touchscreens are essential for creating an interactive experience on your stand whilst utilising large-format display solutions.

Item	Early Bird Rate	Standard Rate
iPad Pro 12.9"	Contact us	Contact us
iPad Air	Contact us	Contact us





# LED TRAILERS.

Industry leading full HD-3.9mm pixel pitch for superior image, and fully height-adjustable with 360° rotation.

- **Versatility**

These **Indoor / Outdoor LED Trailers** can be used for a range of indoor and outdoor events, from sporting events and festivals to trade and events taking place in city centres.

- **Mobility**

It's now easier than ever to get **huge, high quality LED screen** systems to, from, and around your event.

- **Superior Engagement**

Our LED trailers get **more eyes on your content** and your brand. Our 28m<sup>2</sup> LED walls are 33% larger than the standard 21m<sup>2</sup> and will **boost engagement** at your event and help you create higher levels of interest.

- **Ease of Use**

Specifically designed to be swiftly deployable and easy to operate, our LED trailers **save on time and costs**. Set-up takes less than an hour.

Interested in LED trailers for your event? get in touch:  
[sales@dbpixelhouse.com](mailto:sales@dbpixelhouse.com) | +44 (0) 7866 811 220





# COMPUTERS.

We have a wide spectrum of desktops and laptops available for hire, all providing a seamless and interactive experience.

Item	Early Bird Rate	Standard Rate
Desktop (minimum spec i7)	£85	£102
Mini PC Intel Nuc i7	£90	£108
Apple MacBook Pro	£290	£350
Apple iMac 21.5"	£210	£250
Apple iMac 27"	£270	£350
Laptop (minimum spec i7)	£150	£180
Apple Mac Mini, i7, 4GB, 1TB	£165	£198





# CREATIVE SERVICES.

Our creative services cover a great range of deliverables.

- **Content Editing**

Rendering content already at our disposal for LED and specific video wall configurations, stitching **assets already made** from the client into a video.

- **Video Creation**

Use **existing content** to produce a promo video or **informative piece**. This will include brief overview documentation, story board, review comments, final piece, and storage for 1 year.

- **Onsite Static Recording (with edit bolt-on)**

We can **record conferences** from 1 or more angles, for specific sessions or for the organiser. Collate all the assets and send over to client with **breakdown of days** and **sessions**.

- **Onsite Dynamic Recording (with edit bolt-on)**

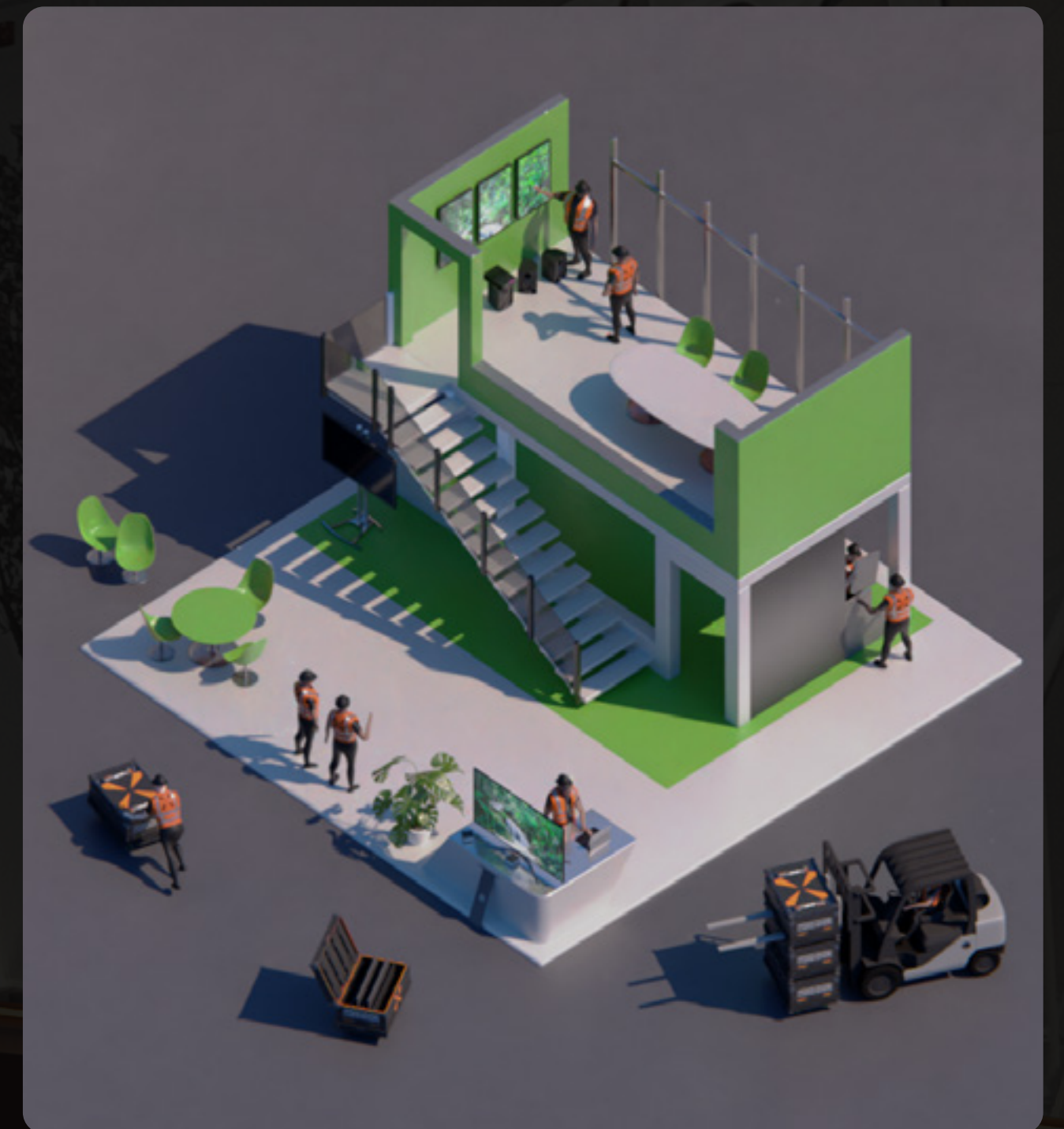
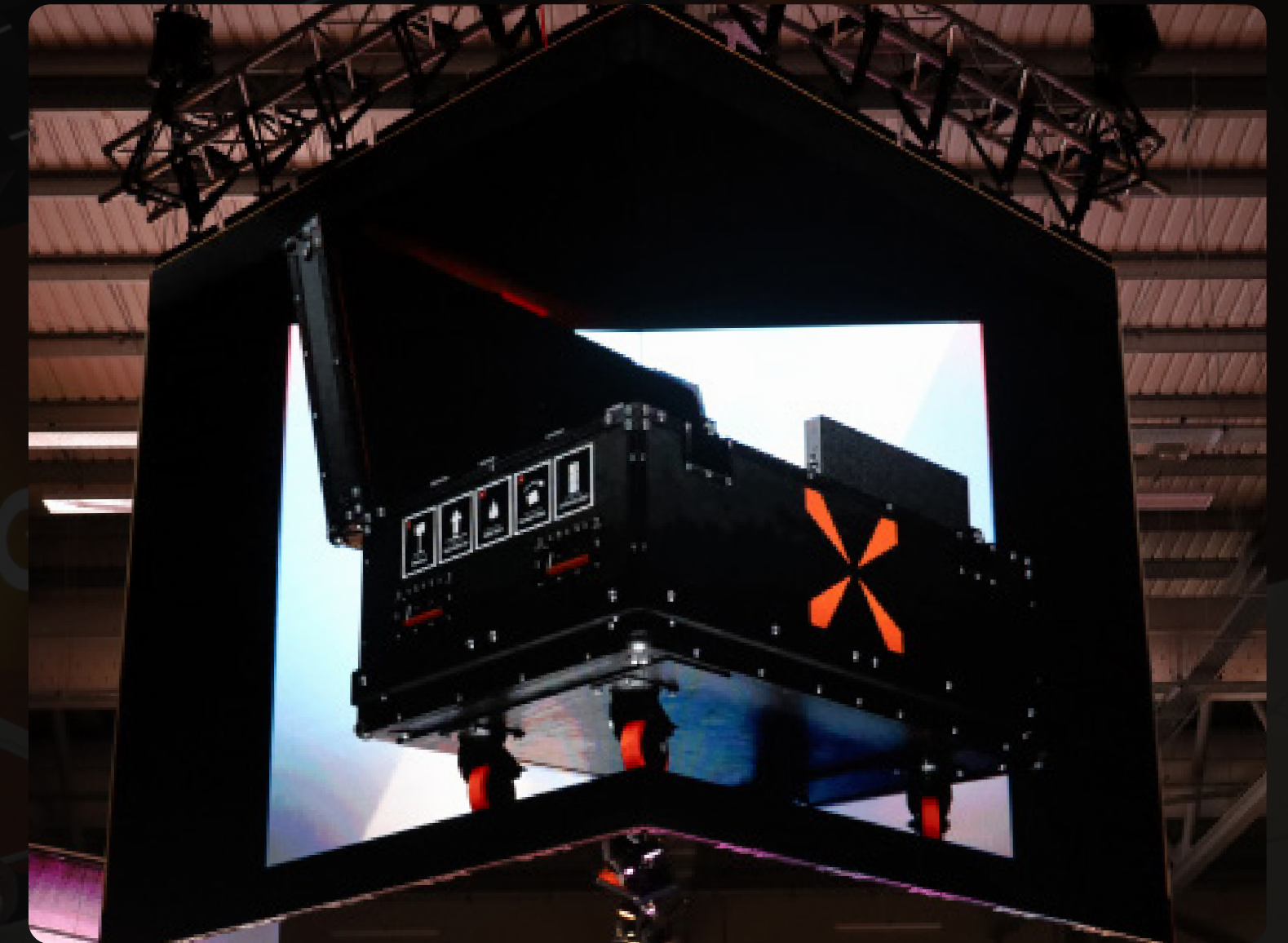
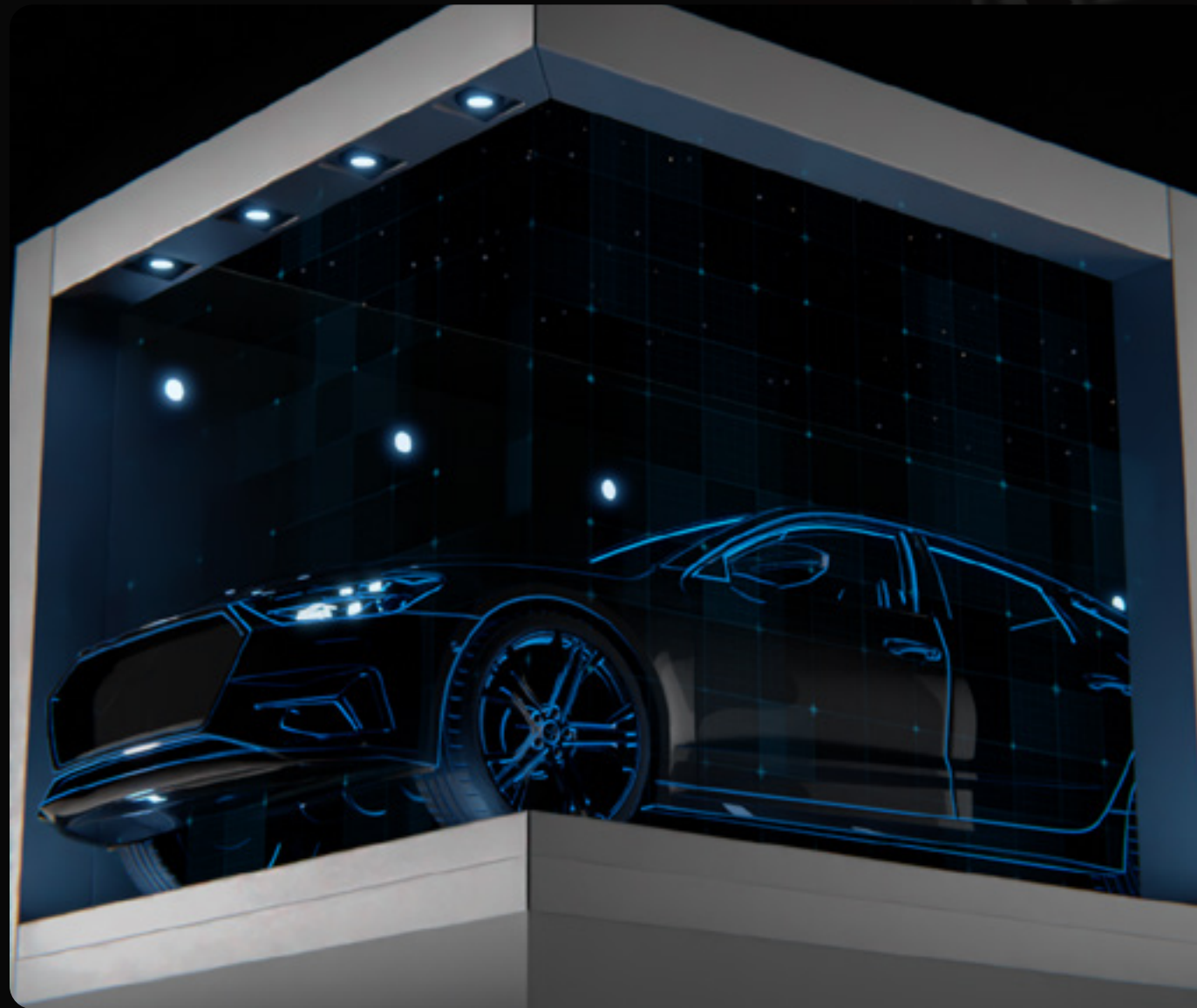
1 or more Roaming cameras on stand or venue. Recording “highlights” of the show to send to client.

- **Time-lapse**

Stand recording on **build up / show / breakdown**. This recording will be done over a longer length of time.

- **Visualisations and Renders**

Visualisation service for **equipment, stands, exhibitions, venues**, and any other **3-dimensional space** to be built or quoted





# UNIQUE DISPLAYS.

Within our AV fleet, we have the ability to provide some of the most unique and attention grabbing technology

**We can offer:**

Videowalls

Transparent OLED screens

Smart Window

Hypervision Solo

Pyramoid





# DESKTOP & LAPTOP ACCESSORIES.

We offer a range of peripherals and control equipment for use alongside your devices.

Item	Early Bird Rate	Standard Rate
Flat-base monitor stand	£45	£54
Parabella stand w/ glass shelf	£90	£108
Media player w/ USB drive	£50	£60
Standard keyboard	£5	£6
USB mouse	£3	£4
Wireless keyboard and mouse	£25	£30
Handheld presentation mouse	£15	£18





# AUDIO & ACCESSORIES.

We offer a range of peripherals and control equipment for use alongside your devices.

Item	Early Bird Rate	Standard Rate
PA System (amp, EQ, 2 speaker cabs, mixer, stand / wall mounts, wired microphone)	£315	£378
UHF hand-held mic & receiver (inc OFCOM radio mic licence)	£165	£198
UHF headset / lapel radio microphone, beltpack & receiver (inc OFCOM radio mic licence)	£165	£198
Trilite lectern mic & clamp	£40	£48





# HOW TO ORDER WITH US.

Book online at [www.dbpixelhouse.com/book](http://www.dbpixelhouse.com/book)  
Input your password: LBF2025

Alternatively call **+44 (0)345 226 3083** or email your technical brief to us and we will produce a bespoke quote for you. To help us produce an accurate quotation we may require a stand plan or visual.

## Services Available

• <b>Compulsory</b>	Damage waiver premium	Covers against damage and theft, see out T&Cs (Does not include tablets)	<b>15%</b>
• <b>Compulsory</b>	Service Charge	Our full service covers pre-show administration, delivery to your booth, full installation, case storage, daily switch on & off, dismantle & pack up. Technical assistance on site is available 08:00 – 18:00 daily (See Service Charge information)	<b>40% of equipment subtotal</b>
• <b>Optional</b>	Dedicated Technician	Get your very own experienced DB Tech, on standby, to assist you with the AV & IT at your stand (excl hotel & per diems as required)	<b>£380.00 per day</b>
• <b>Optional</b>	Additional Cable	All monitors are supplied with 2m cable as standard. Additional cable is available for hire.	<b>£1.00 per metre past 5 metres</b>
• <b>Where Applicable</b>	Credit Card Transactions	All credit card transactions will be processed in GBP Sterling at the published rate on the day of processing. Rental payment is due in advance.	<b>VAT 20% (if applicable)</b>



Please note, all equipment is subject to availability



# SERVICE CHARGE.

DBpixelhouse operates a service charge facility at many shows we attend

## What **is** included in your service charge

- ✓ Pre-event administration
- ✓ Freight to and from the venue
- ✓ Delivery to your trade stand or booth area
- ✓ Installation using 'pool' DB technicians led by a DB Project Manger
- ✓ Testing, sign off & a copy of our onsite contact details
- ✓ Daily check (pre-open) including clean of screens and basic switch on assistance
- ✓ Our support team is onsite should you need us
- ✓ Dismantle, pack up and removal

## What **isn't** included in your service charge

- ✗ Timed delivery and installation
- ✗ Dedicated event standby  
(available at extra cost, please ask your account handler)
- ✗ Working at height above 2m  
(available at extra cost, please ask your account handler)
- ✗ Working before 08:00 or after 20:00 unless previously arranged.  
It is not expected that we would start an install after 19:00
- ✗ Under floor cabling

## Our promise to you

We're here to help you get the most from the event and shall endeavour to do everything in our control to help you achieve this.  
Don't forget to contact us if you require any assistance or creative advice!

## Can't find what you're looking for?

For bespoke requirements regarding both tech, or content, please call our friendly sales team on **+44 (0) 345 226 3083**  
Alternatively, you can email **[sales@dbpixelhouse.com](mailto:sales@dbpixelhouse.com)**

Please note that our **compulsory** service charge has a minimum excess of **£120**





# FREQUENTLY ASKED QUESTIONS.

Below are some questions that come up often when preparing for an event

**I am arriving at the venue in the morning / afternoon and only have a few hours to set up, can you help?** ?

If you speak to your account manager in advance we shall endeavour to schedule the install to best suit your setup day; but timed deliveries are not possible. We can't leave equipment on your stand unattended either so if we do miss each other, the best thing to do would be to find our service desk.

**There have been some last-minute changes to my requirements, can you help?** ?

Yes. We have spare equipment onsite & if you want something that needs to come from our warehouse we can make those arrangements & advise you of a cost and an ETA for when we can get the equipment to your stand.

**How do I contact you when I arrive onsite?** ?

We will have a service desk and / or a stores area onsite that is manned by our staff. It is usually located near the organisers office. If you can't find us please call **0345 226 3083**, alternatively, you can approach anyone wearing our **branded uniform** onsite.

**I need to leave as soon as the show finishes, is this possible?** ?

You're responsible for the equipment until its safely collected so we only ask that if you wish to leave immediately the show finishes, you tell our onsite team and we'll make sure we collect your equipment in advance of others.

**I want to attach a rental screen to the wall of a shell-scheme, can you help?** ?

You should immediately speak to the shell scheme contractor and ask them to reinforce the wall (with a 'pad') for which they will charge you. We can then attach the screen to the wall safely.

\*NB Cable management can sometimes be a problem with shell scheme installs and our advice is to speak to your DB account handler about this in advance. If the pad has not been installed when you arrive, you should speak with the shell contractor or hire a monitor stand from us. If a drawing / render or stand plan exists – we need a copy with your order.





# THANK YOU!

If there's anything else you need, please don't hesitate to ask!

Your key contact is:



**SHAUN ROBERTS**

Account Manager

Get in touch

[shaun.roberts@dbpixelhouse.com](mailto:shaun.roberts@dbpixelhouse.com) | [sales@dbpixelhouse.com](mailto:sales@dbpixelhouse.com) | +44 (0) 7973 738 197

