

# THE LONDON BOOK FAIR®

12-14 APRIL 2016  
OLYMPIA, LONDON

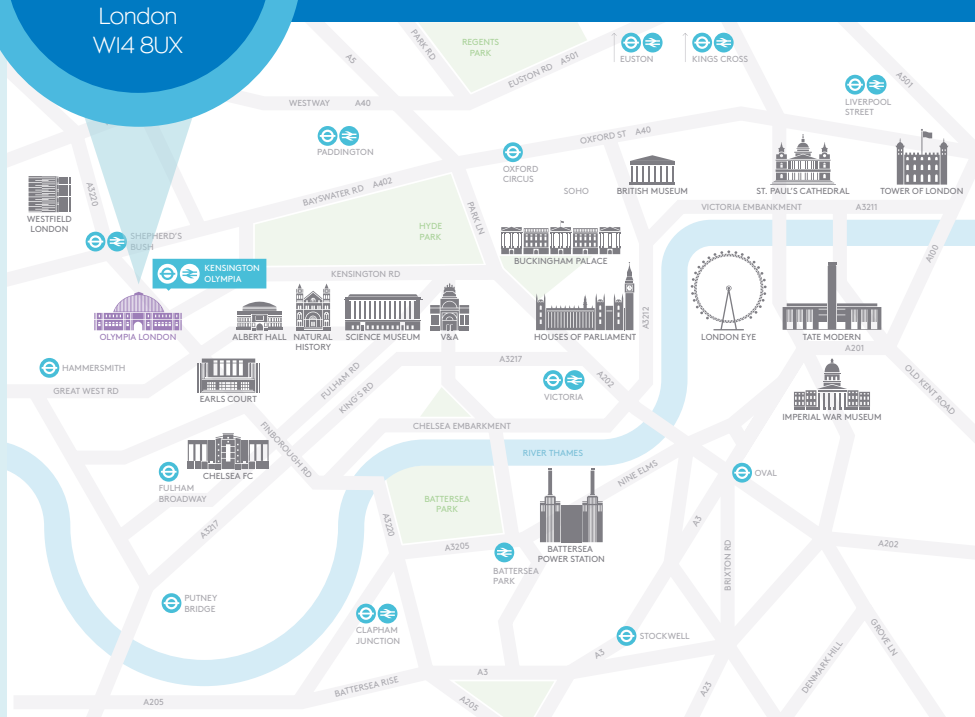
CELEBRATING 45 YEARS

# THE LBF TRAVEL GUIDE

The London Book Fair 2016 will take place at the stunning Olympia, West London. This guide aims to make your visit to London as enjoyable as possible with travel information, hotel and restaurant recommendations as well as ideas on what to do whilst you're here.

## OLYMPIA LONDON

Hammersmith Road  
Kensington  
London  
W14 8UX



## TRAIN / TUBE



Olympia is the only venue in London with a dedicated rail station – Kensington (Olympia). It's served by the London Overground and National Rail networks. A further 5 underground lines are connected; only a short walk away.

### OVERGROUND

Kensington (Olympia) is on the London Overground network. It's one stop from Shepherd's Bush (Central Line) or West Brompton (District Line).

### CENTRAL

Change at Shepherd's Bush for a two minute Overground train to Kensington (Olympia).

### PICCADILLY

Hammersmith Station is a five minute bus ride or 15 minute walk away.

### HAMMERSMITH & CITY

Hammersmith Station is a five minute bus ride or 15 minute walk away.

### CIRCLE

Hammersmith Station is a five minute bus ride or 15 minute walk away. High Street Kensington is a four minute bus ride or 12 minute walk away.

### DISTRICT

Change at West Brompton for a two minute Overground train to Kensington (Olympia). Alternatively, West Kensington is an eight minute walk away and High Street Kensington is a four minute bus ride or a 12 minute walk away.

## PARKING

If you are travelling by car, it is best to book your car parking in advance through the office on 020 7598 2515, or through the Olympia website:

[www.olympia.co.uk](http://www.olympia.co.uk)



## TAXI

If you are planning on travelling by taxi, you can simply flag down a licenced London taxi (black cab) outside the venue. If you wish to book a private hire vehicle or minicab by telephone then most hotels will have a list of reputable, licensed operators.



# HOTELS



Dovetail Foks are the official accommodation agent for LBF 2016. They provide an expansive selection of accommodation options for everyone coming to London for the Fair.

Contact information:

[Jessica@hotelmap.com](mailto:Jessica@hotelmap.com)

ref code: **M6Z5Z**



# BUS



**27** runs from Chalk Farm to Turnham Green (south) and Turnham Green to Chalk Farm (north). This bus runs 24 hours a day.



**49** runs from White City to Clapham Junction (south) and Clapham Junction to White City (north).



**391** runs from Fulham to Richmond (south) and Richmond to Fulham (north).



**9** runs from Aldwych to Hammersmith (south) and Hammersmith to Aldwych (north). There is also a night bus route - N9.



**10** runs from Kings Cross to Hammersmith (south) and Hammersmith to Kings Cross (north). There is also a night bus route - N10 - that extends to Richmond (south).



**28** runs from Kensal Rise to Wandsworth (south) and Wandsworth to Kensal Rise (north). There is also a night bus route - N28 that extends to Camden Town (north).



# MAKE THE MOST OF YOUR STAY

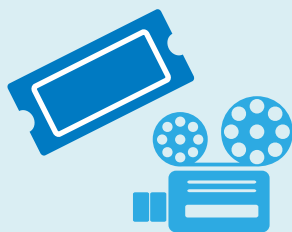
## RESTAURANTS / BARS



London has an extraordinary range of restaurant and bar options featuring incredible food and drink. For a hand-picked selection of the best restaurants and bars in the Olympia area, pick up a copy of our 2016 LBF Castro Guide upon arrival or visit:

[www.olympia.co.uk/visiting/food-drink](http://www.olympia.co.uk/visiting/food-drink)

## WHAT'S ON



Make the most of your time in London by experiencing everything it has to offer – films, theatre, art, gigs, clubs, shops and so much more! Head to TimeOut London to search for what's on during The London Book Fair and plan your stay in our amazing city:

[www.timeout.com/london](http://www.timeout.com/london)



**LONDON  
BOOK &  
SCREEN  
WEEK.**

**11 - 17  
April 2016**



London Book & Screen Week unites readers, writers, gamers and film fans, with hundreds of events taking place across the capital that celebrate stories and the written word in all its forms. Planning an event? Submit it via the LBSW website and get involved:

[www.londonbookandscreenweek.co.uk/about](http://www.londonbookandscreenweek.co.uk/about)

