

THE LBF TRAVEL GUIDE

THE
LONDON
BOOK
FAIR®

OLYMPIA
14-16 APRIL
2015

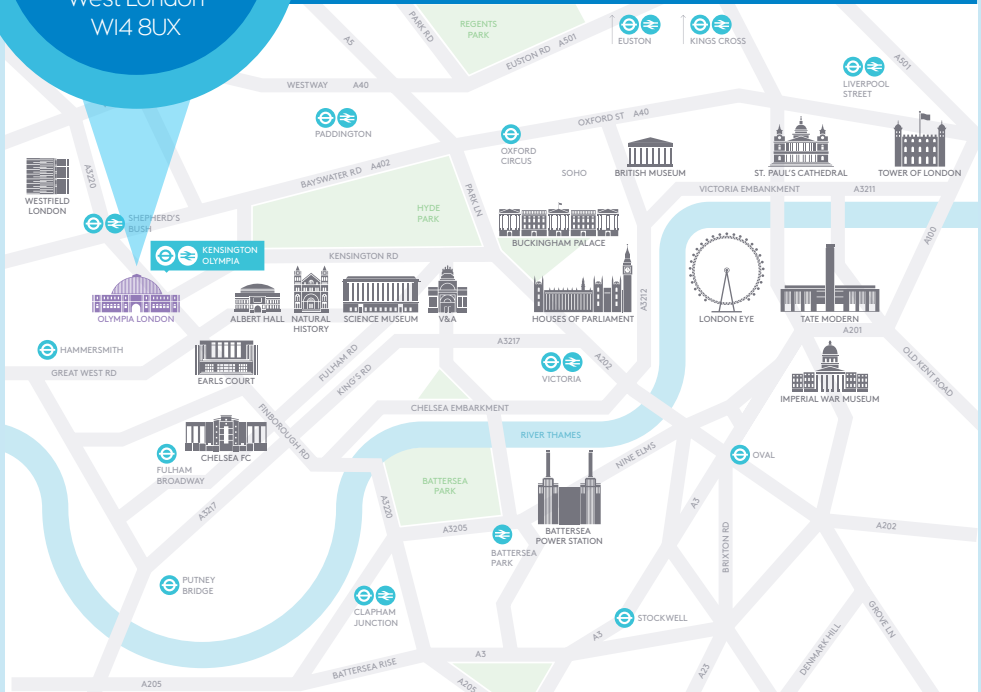
MAKING WORDS GO FURTHER

The London Book Fair 2015 will take place at the newly refurbished Olympia, West London just down the road from our old home; Earls Court. This guide aims to make your visit to London for the week of the Fair as enjoyable as possible with travel information, hotel and restaurant recommendations as well as ideas on what to do whilst you're here.



OLYMPIA LONDON

Hammersmith Road
Kensington
West London
W14 8UX



GETTING AROUND AND WHERE TO STAY

TRAIN

Olympia is served by the London Overground and National Rail Networks. A further 5 underground lines are connected; only a short walk away (Shepherd's Bush, Hammersmith Station, High Street Kensington, West Brompton and West Kensington). Please be aware that the Kensington Olympia tube will NOT be running during the Fair but there are plenty of other options to make travelling to the Fair easy and simple.

OVERGROUND

Kensington (Olympia) is on the London Overground network. It's one stop from Shepherd's Bush (Central Line) or West Brompton (District Line).

KENSINGTON OLYMPIA

NATIONAL RAIL

Kensington (Olympia) is on the National Rail network with regular trains running into Clapham Junction.



BUS

27 runs from Chalk Farm to Turnham Green (south) and Turnham Green to Chalk Farm (north). This bus runs 24 hours a day.



49 runs from White City to Clapham Junction (south) and Clapham Junction to White City (north).



391 runs from Fulham to Richmond (south) and Richmond to Fulham (north).



9 runs from Aldwych to Hammersmith (south) and Hammersmith to Aldwych (north). There is also a night bus route - N9.



10 runs from Kings Cross to Hammersmith (south) and Hammersmith to Kings Cross (north). There is also a night bus route - N10 - that extends to Richmond (south).



28 runs from Kensal Rise to Wandsworth (south) and Wandsworth to Kensal Rise (north). There is also a night bus route - N28 that extends to Camden Town (north).



Dedicated bus service from Earls Court > Olympia

Find yourself at Earls Court on the morning of the Fair? Don't worry - we're pleased to announce that a dedicated bus service will be running from Earls Court Station to Olympia during the three days of the Fair (14-16 April 2015). The service, due to run 8 buses per hour, will be marked up for Olympia and will help make your journey to the Fair as easy as possible. You will need a relevant ticket to use this service.

OYSTER



It is significantly cheaper to use an Oyster Card to travel around London on public transport. An Oyster Card is a plastic smartcard which you add pre-paid credit to in order to then travel on the bus, tube, DLR, London Overground and most National Rail services. Please be aware that you can no longer use cash on buses in London – Oyster Cards or contactless cards **MUST** be used.

TFL offers a visitor Oyster Card which can be bought for £3 from Transport for London (visitorshop.tfl.gov.uk). This can be bought prior to travelling to London and be sent to your home/work address.

We would recommend purchasing a visitor Oyster Card with an initial balance of £20 if you are attending all three days of the Fair. You can add more credit during your time in London by going to any tube station, travel information centre or Oyster ticket stop.

PARKING

If you are travelling by car, it is best to book your car parking space in advance through the office on 020 7598 2515, or through the Olympia website: www.olympia.co.uk



TAXI



For 2015 we have partnered with Hailo, an app-based company allowing you to get a taxi or licensed car in two quick taps. The app is available on both Apple and Android, simply download to book!

Use promo code **LBSW15** to unlock £10 Hailo credit www.hailoapp.com



HOTELS



Dovetail Foks are the official accommodation agent for LBF 2015. They provide an expansive collection of accommodation options for everyone coming to London for the Fair.

TOP TIP – Olympia is 10 minutes down the road from Earls Court so if you have a yearly booking there's no need to change it!

www.londonbookfair.co.uk/accommodation



MAKE THE MOST OF YOUR STAY

RESTAURANTS / BARS



London has an extraordinary range of restaurant and bar options featuring incredible food and drink. For a hand-picked selection of the best restaurants and bars in the Olympia area, please visit:

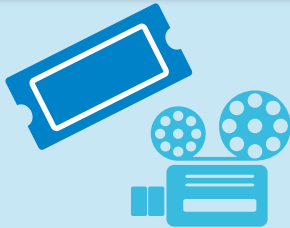
www.olympia.co.uk/visiting/food-drink

WHAT'S ON



Make the most of your time in London by experiencing everything it has to offer – films, theatre, art, gigs, clubs, shops and so much more! Head to TimeOut London to search for what's on during the Fair and plan your stay in this amazing city.

www.timeout.com/london



**LONDON
BOOK &
SCREEN
WEEK.**

**13 - 19
April 2015**



London Book & Screen Week unites readers, writers, gamers and film fans, with hundreds of events taking place across the capital that celebrate stories and the written word in all its forms. Planning an event? Submit it via the LBSW website and get involved:

www.londonbookandscreenweek.co.uk/about

[@LBandSW](#)

